

# Integrating AI with SDD: From Dialogue to Dialectics

Jeff Diedrix, <https://7letters.solutions/>, [jeff.diedrich@gmail.com](mailto:jeff.diedrich@gmail.com)



Alanas Petruskas, <https://dialexity.com/>, [alanas@dialexity.com](mailto:alanas@dialexity.com)



Collective Wisdom...

## 7 Potential to strongly aid with SDD Law #6: Requisite Evolution of Learning

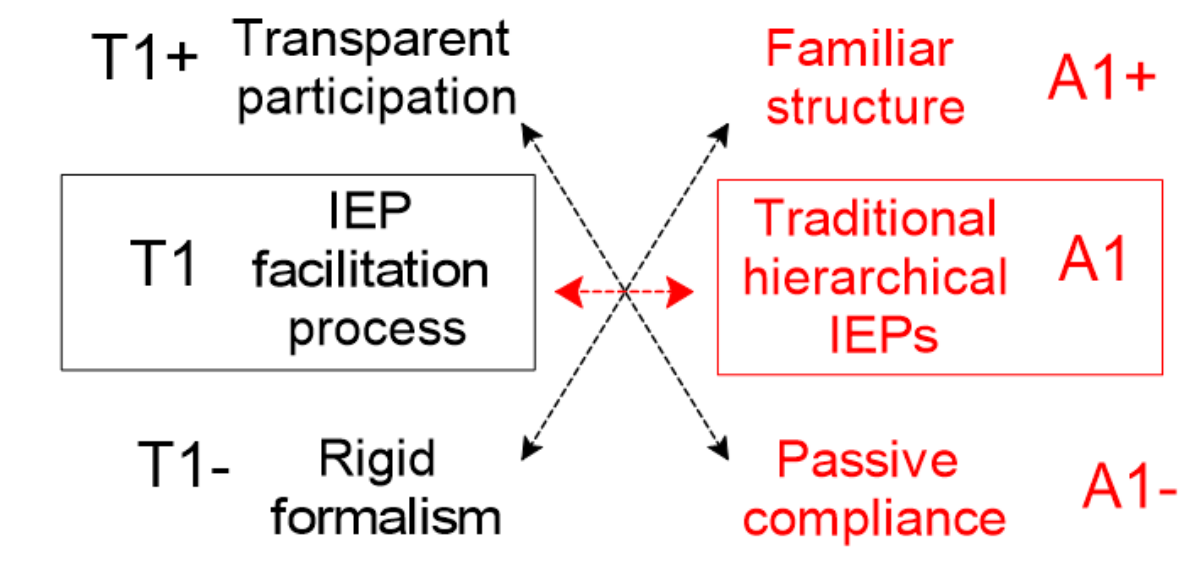
- Identifies potential blind spots
- Aligns with spiral vs. linear evolution



\* Also aids the five additional laws of SDD

## 13 Universal Fairness & Constructivity

**Fairness:** assign equal weights to T+, T-, A+, A-



**Constructivity:** Foster A+ - Turn the Opponent into Teacher

## 2 Two Dialogues

Participants representing all levels of the system engaged in the process of Structured Democratic Dialogue to co-construct an Action Plan to ensure students with disabilities are educated in the least restrictive environment.



### Dialogue 1: Barriers

87 Barriers generated, clarified, categorized, prioritized, & mapped to identify leverage points

### Dialogue 2: Actions

70 Actions generated, clarified, categorized, and prioritized prior to Action Planning

## 8 Dialectical Analysis

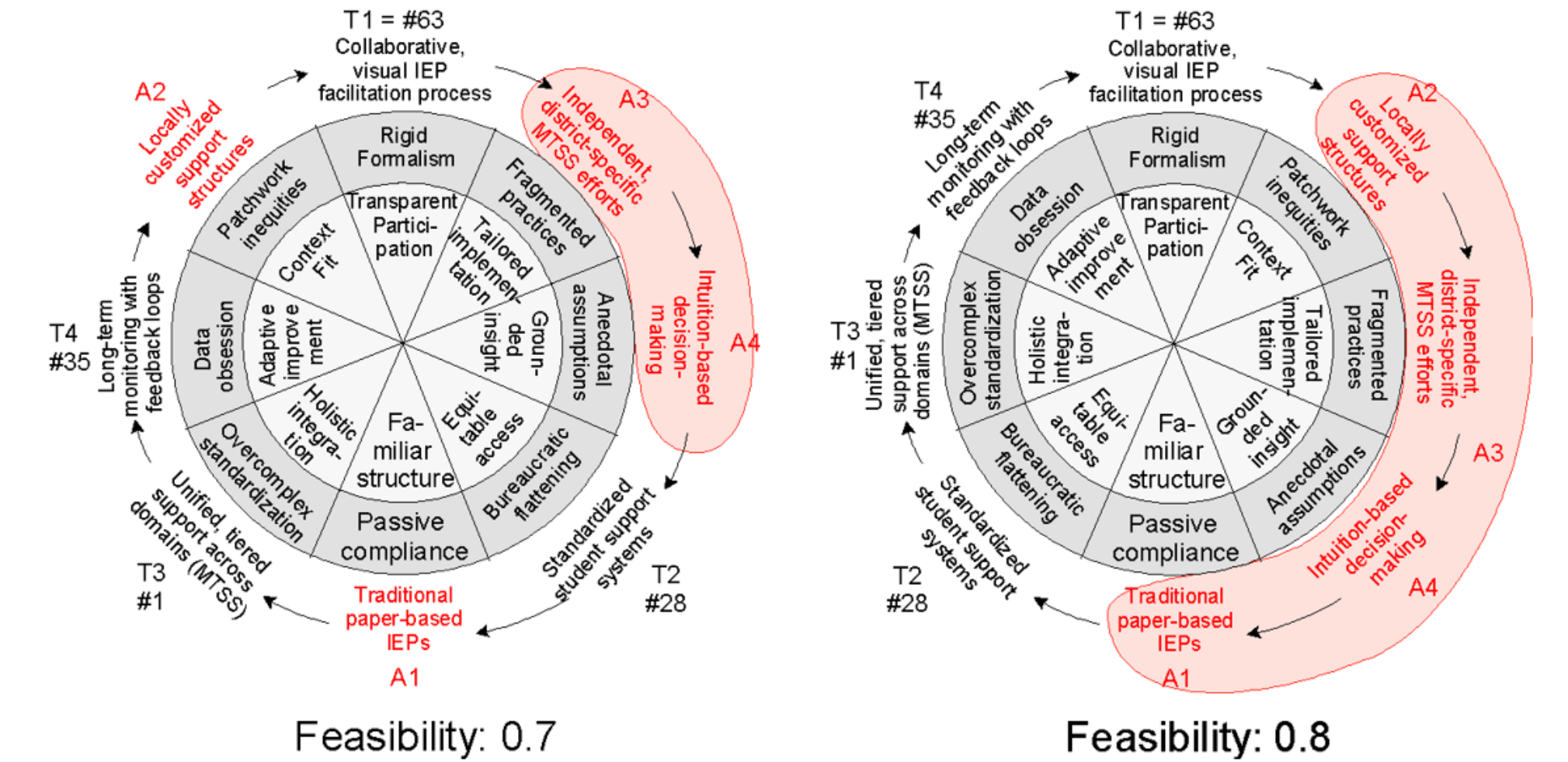
All information generated by participants was provided to Alanas for Dialectical Analysis augmented by AI

Uploaded the data generated by stakeholders to GPT with a variety of prompts

Asked GPT to identify the 4 most important actionable concepts from those prioritized by participants

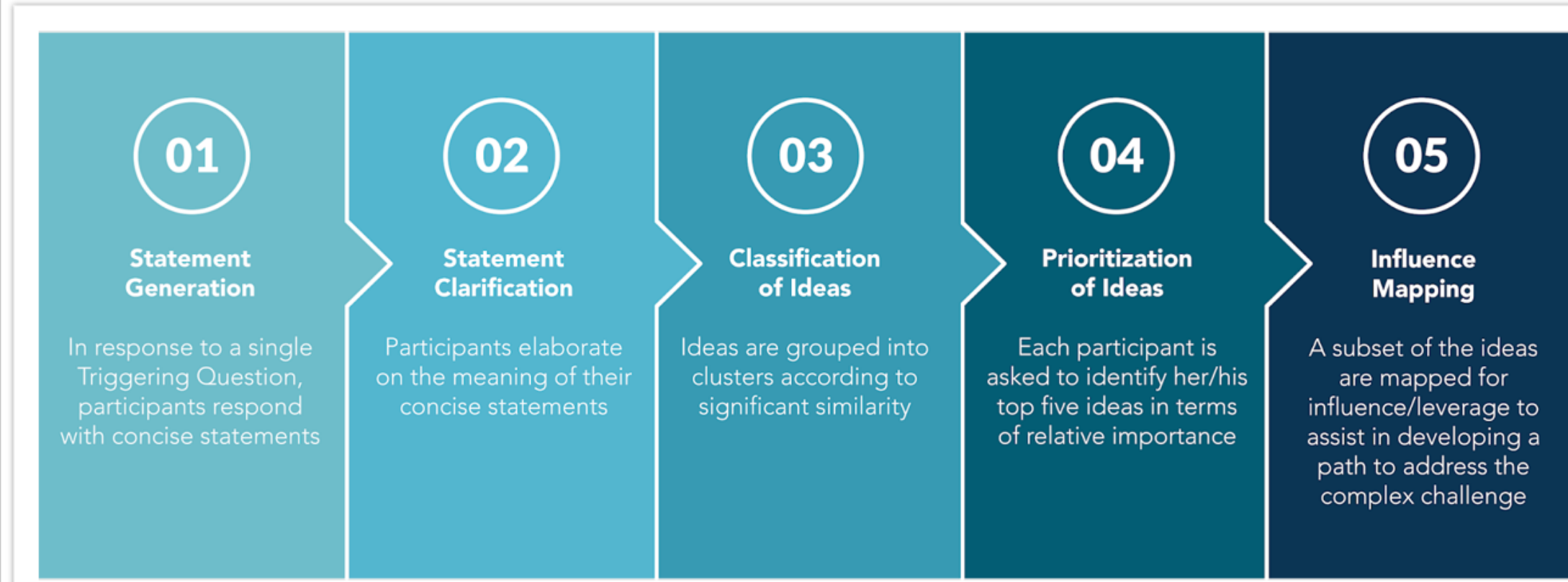
Identified Circular Causality and Diagonal Oppositions for the selected actions

## 14 Dialectic Wheels = Basis for Spiraling



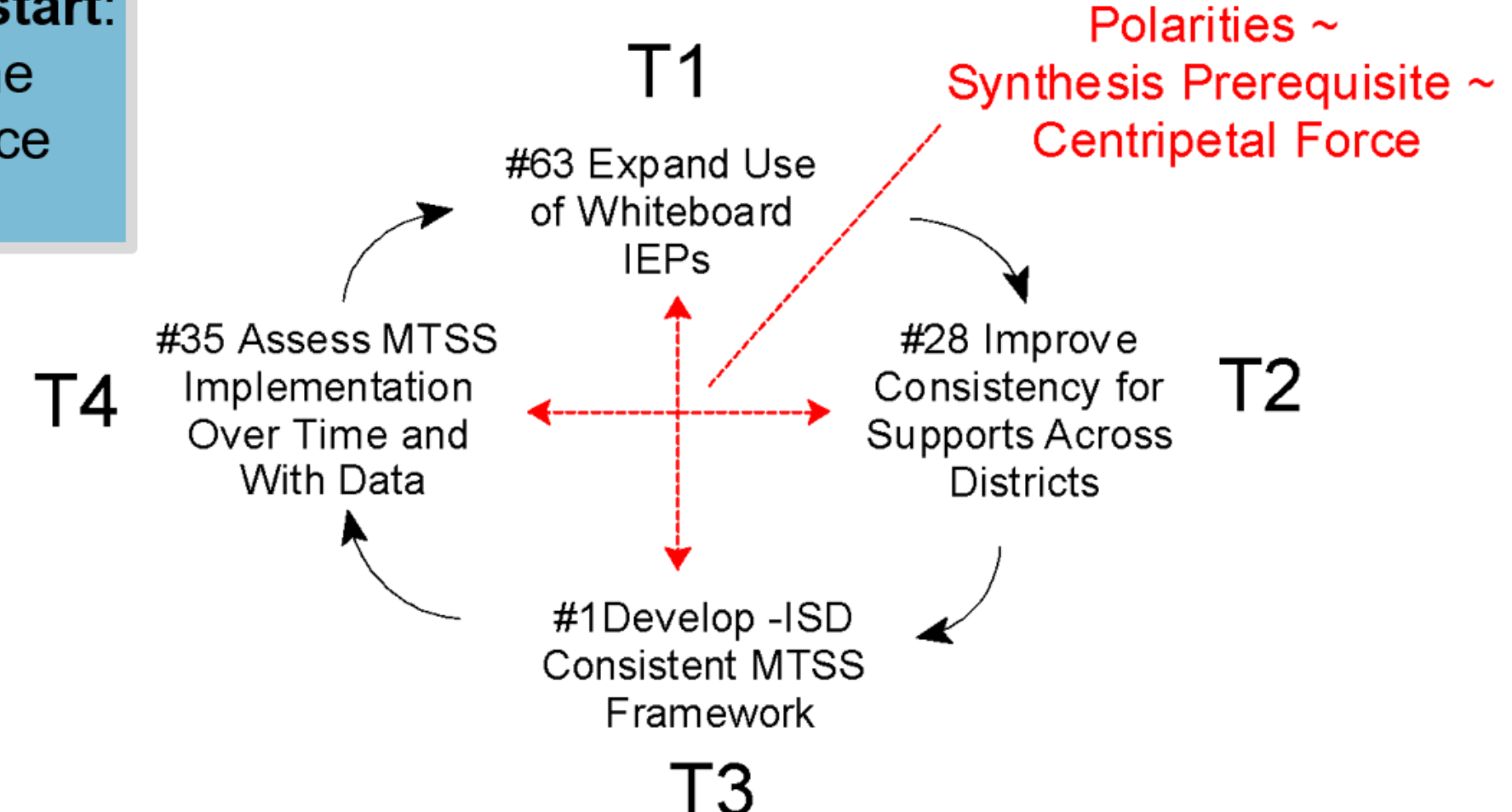
## 3 Structured Democratic Dialogue

A variety of participants representing all levels of the system engage in a dialogue that includes five distinct steps.

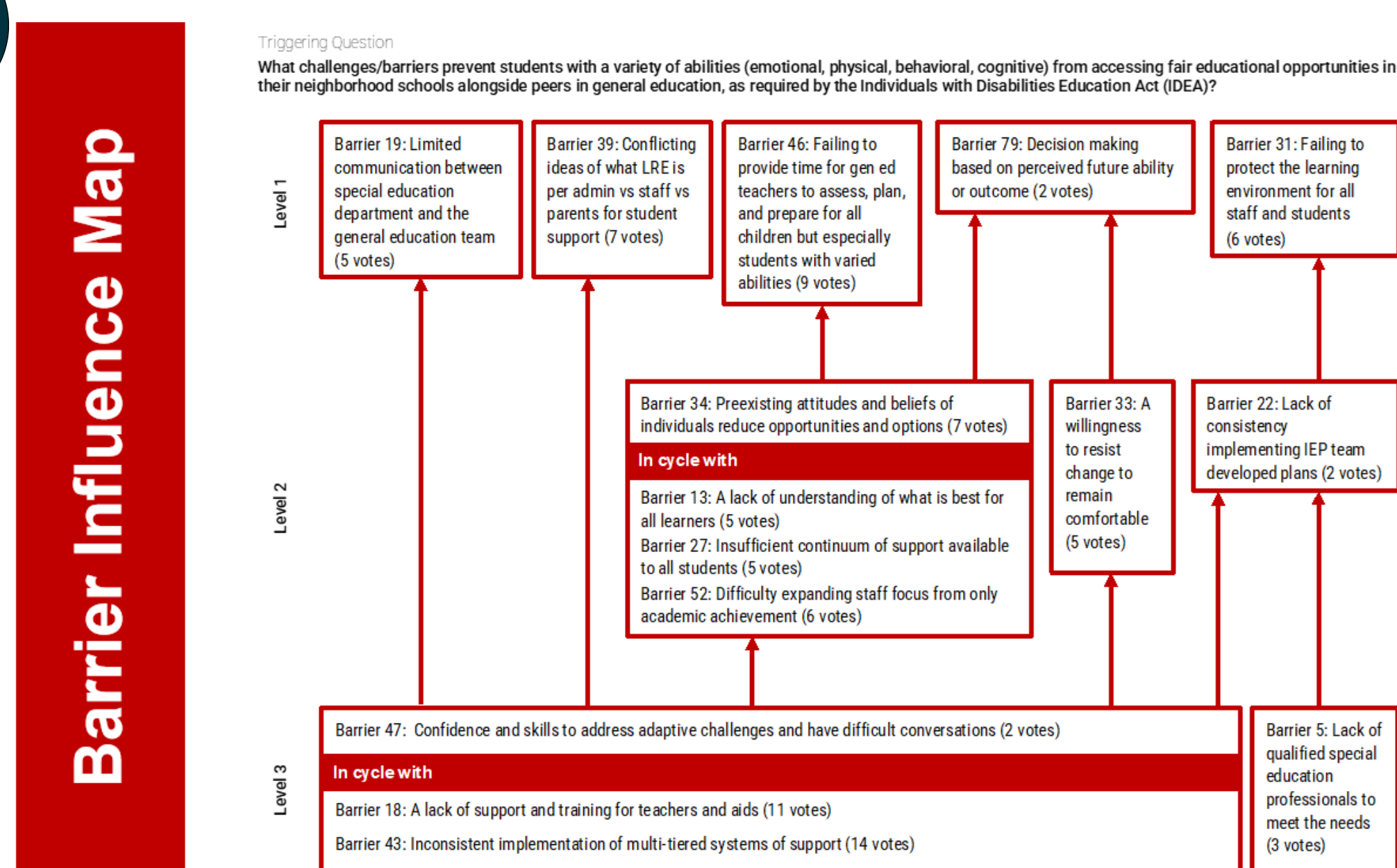


## 9 Circular Causation = Beginning of Spirality

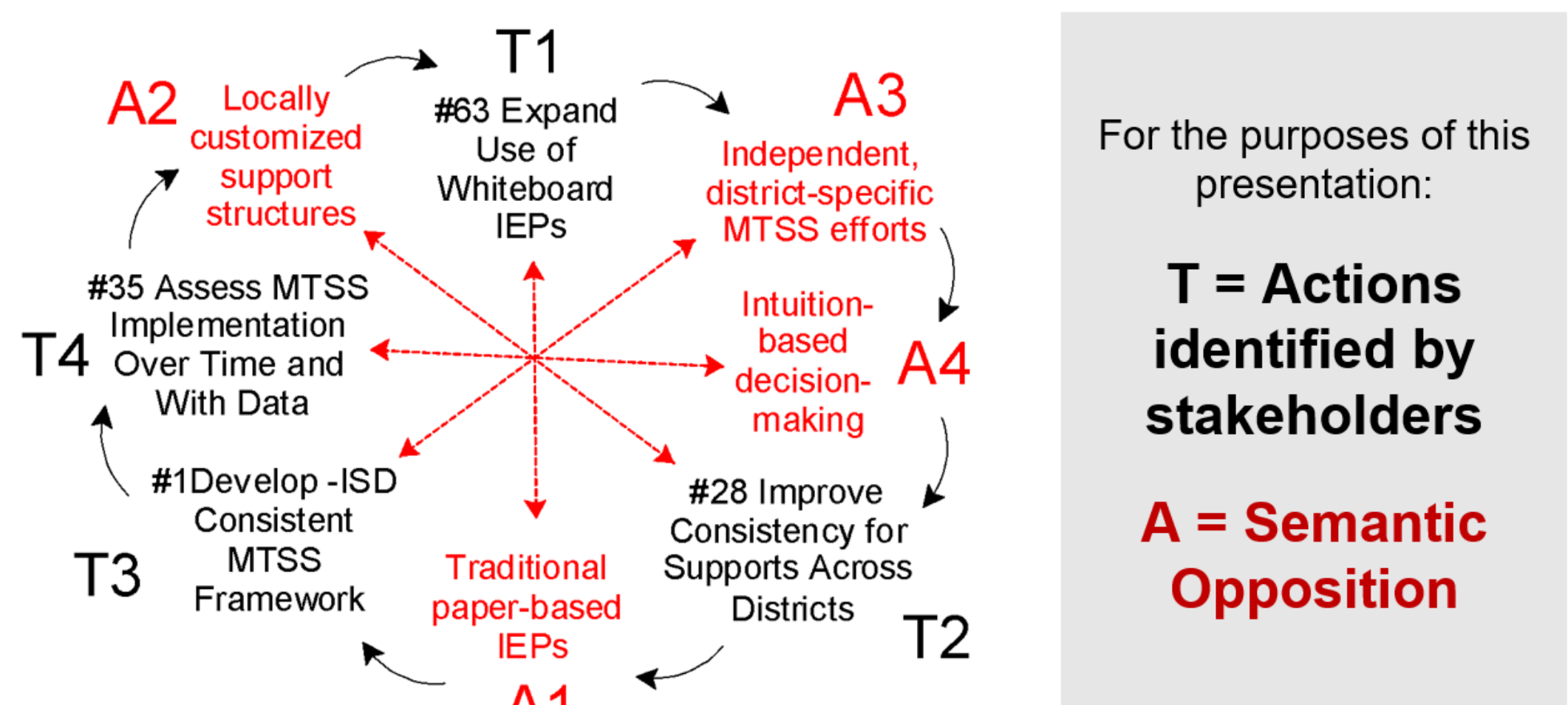
**Optimal start:** Use the Influence Map



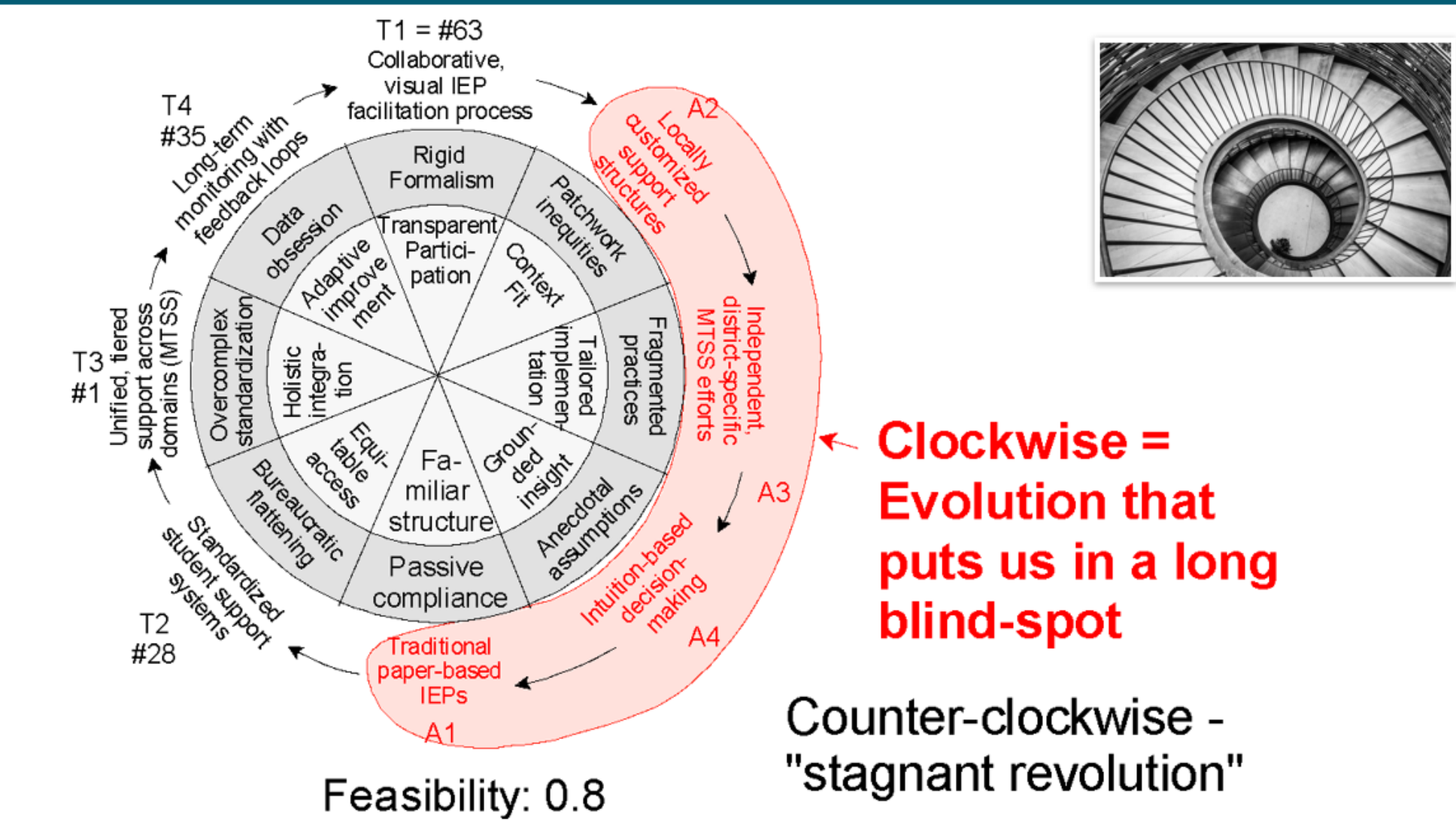
## 4



## 10 Semantic Antitheses = Potential Blind Spots



## 15 Startup Syndrome: Direction vs. Speed



## 16 Only 8 Valid Sequences Due to "Karma Effects"

Feasible	T1 - A2 - A3 - A4 - A1 - T2 - T3 - T4: 0.80
	T1 - T2 - T3 - A4 - A1 - A2 - A3 - T4: 0.75
	T1 - A3 - A4 - T2 - A1 - T3 - T4 - A2: 0.70
	T1 - T2 - A3 - A4 - A1 - A2 - T3 - T4: 0.65
	T1 - T2 - T3 - T4 - A1 - A2 - A3 - A4: 0.60
	T1 - A3 - T2 - A4 - A1 - T3 - A2 - T4: 0.55
	T1 - T2 - A4 - T3 - A1 - A2 - T4 - A3: 0.50
	T1 - A4 - T2 - T3 - A1 - T4 - A2 - A3: 0.40

- Many Feasible Chains = High Self-Regulatory Capacity
- Long Blind-Spots = Need for resilience in uncertainty

## 5 Structured Democratic Dialogue

### Strengths

- Democratic – every participant has equal voice, regardless of role
- Fosters deep learning amongst participants
- Shared ownership
- Identifies what is important and effective
- Ephemeral by design

### Primary Weakness

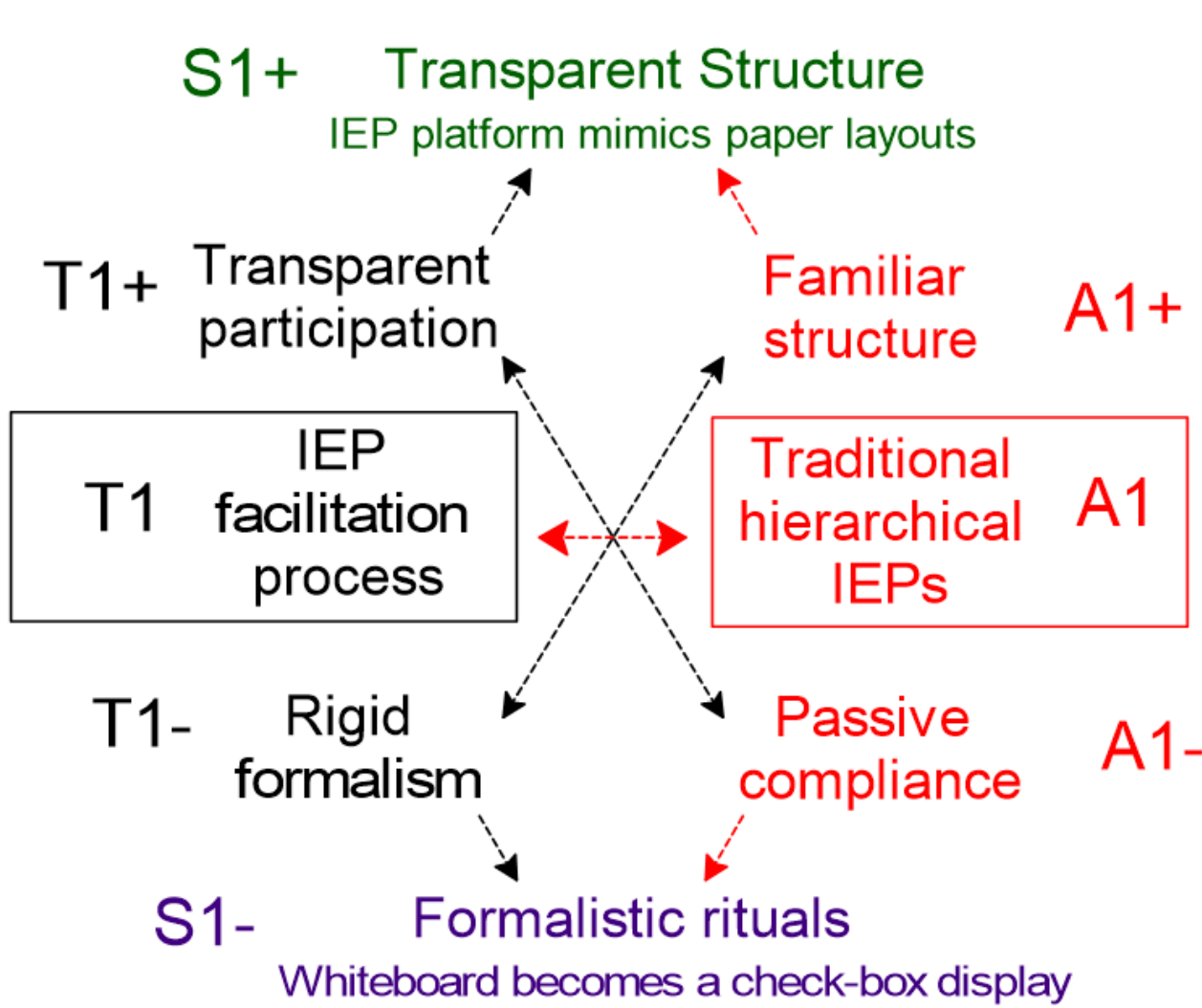
- Action planning phase
- Identified actions are often broad – not intuitively actionable/ implementable
- This can lead to a sense of being overwhelmed, with an increased risk of abandonment of the plan

## 6 AI Augmented Dialectical Analysis

An AI-assisted method to leverage oppositions as complements, and achieve gradual, circular growth that leads to systemic change

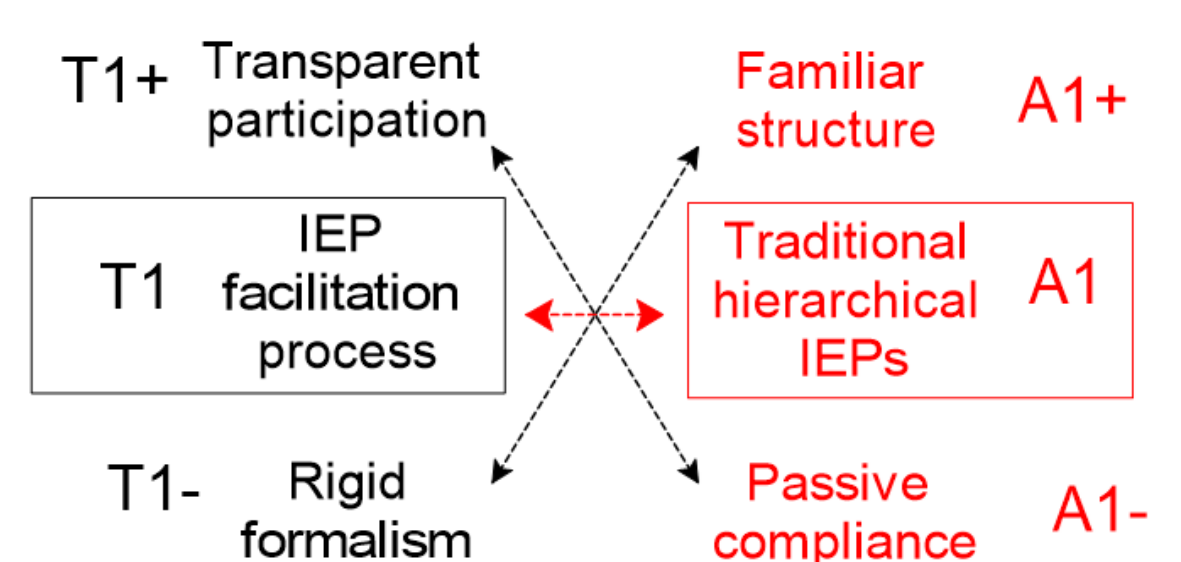


## 11 Semantic Antitheses Definition



## 12 AI Errors Spotted Using Simple Logic

T+ without A+ must yield T-  
A+ without T+ must yield A-

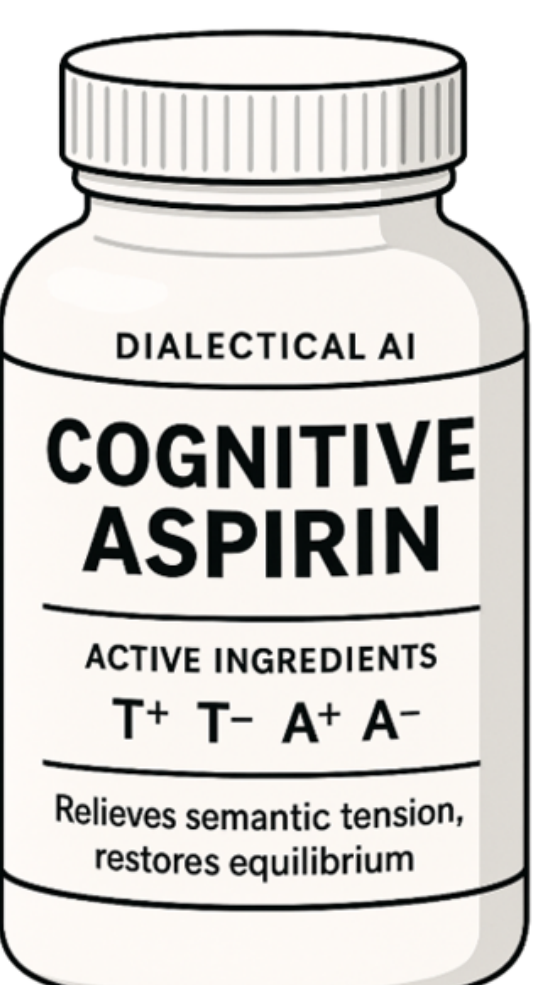


## 17 Dialectics as "Cognitive Aspirin"

Uses AI at the Semantic Level — deviations are easy to trace

Helps to develop inner compass of what is FAIR, by considering T+, T-, A+, A-

Limits the number of scenarios by considering the "delayed karma" effects



## 18 So WHAT? MOVING FORWARD...

AI-augmented dialectical analysis offers significant value when properly implemented with human oversight. However, sponsors must approach it with healthy skepticism and ensure meaningful dialogue among implementation teams.

When used correctly, this tool can deepen understanding of systemic change requirements, strengthen stakeholder ownership, and build resilience against implementation turbulence.

Without proper human guidance, however, it risks becoming a convenient scapegoat for project failures rather than a genuine aid to transformation.

